



CHATTERTON | REES



25-29 Egerton Gardens, London, SW3 2DE
£765,000

A beautifully presented one bedroom flat in a stunning period building on the ever popular Egerton Gardens in Knightsbridge.

Spanning across 550sqft this is a spacious property with some really great features including a large living room with plenty of windows, a separate kitchen and the bedroom has ample built in storage, The bathroom is in great order and the flat has been very well maintained and decorated to a great standard.

Sold with a share of freehold which is hard to come by in such a location, excellent communal areas and access to the gardens opposite we feel this is a perfect property for any type of buyer be it an end user or buy to let investor, the location and size really sets itself apart from most.

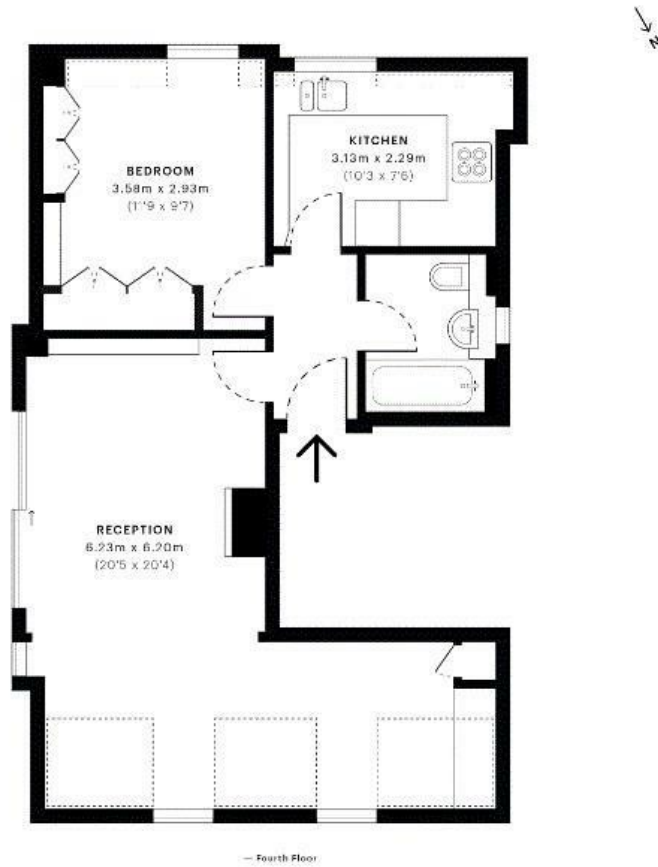
Floor Plan

Egerton Gardens, SW3

GROSS INTERNAL AREA

DRAWN DATE: 13/01/2021 LATEST SCRY POINTS: 1,523,334

50.94 sqm / 548.31 sqft



Area Map



Energy Efficiency Graph

Energy Efficiency Rating		
	Current	Potential
Very energy efficient - lower running costs		
(92 plus) A		
(81-91) B		
(69-80) C		
(55-68) D		
(39-54) E		
(21-38) F		
(1-20) G		
Not energy efficient - higher running costs		
England & Wales EU Directive 2002/91/EC		
Environmental Impact (CO ₂) Rating		
	Current	Potential
Very environmentally friendly - lower CO ₂ emissions		
(92 plus) A		
(81-91) B		
(69-80) C		
(55-68) D		
(39-54) E		
(21-38) F		
(1-20) G		
Not environmentally friendly - higher CO ₂ emissions		
England & Wales EU Directive 2002/91/EC		

These particulars, whilst believed to be accurate are set out as a general outline only for guidance and do not constitute any part of an offer or contract. Intending purchasers should not rely on them as statements of representation of fact, but must satisfy themselves by inspection or otherwise as to their accuracy. No person in this firm's employment has the authority to make or give any representation or warranty in respect of the property.